



S E A M E O
SEARCA



REGIONAL POLICY FORUM

From Farms to School:

Towards Sustainable and Inclusive School-Based
Food and Nutrition Programs in Southeast Asia

24-25 April 2023 | Alabang, Philippines



DepEd Integrated Program for School Nutrition

Dexter A. Galban, RN, RBP, MD, MBA, MPM
Assistant Secretary for Operations
Department of Education

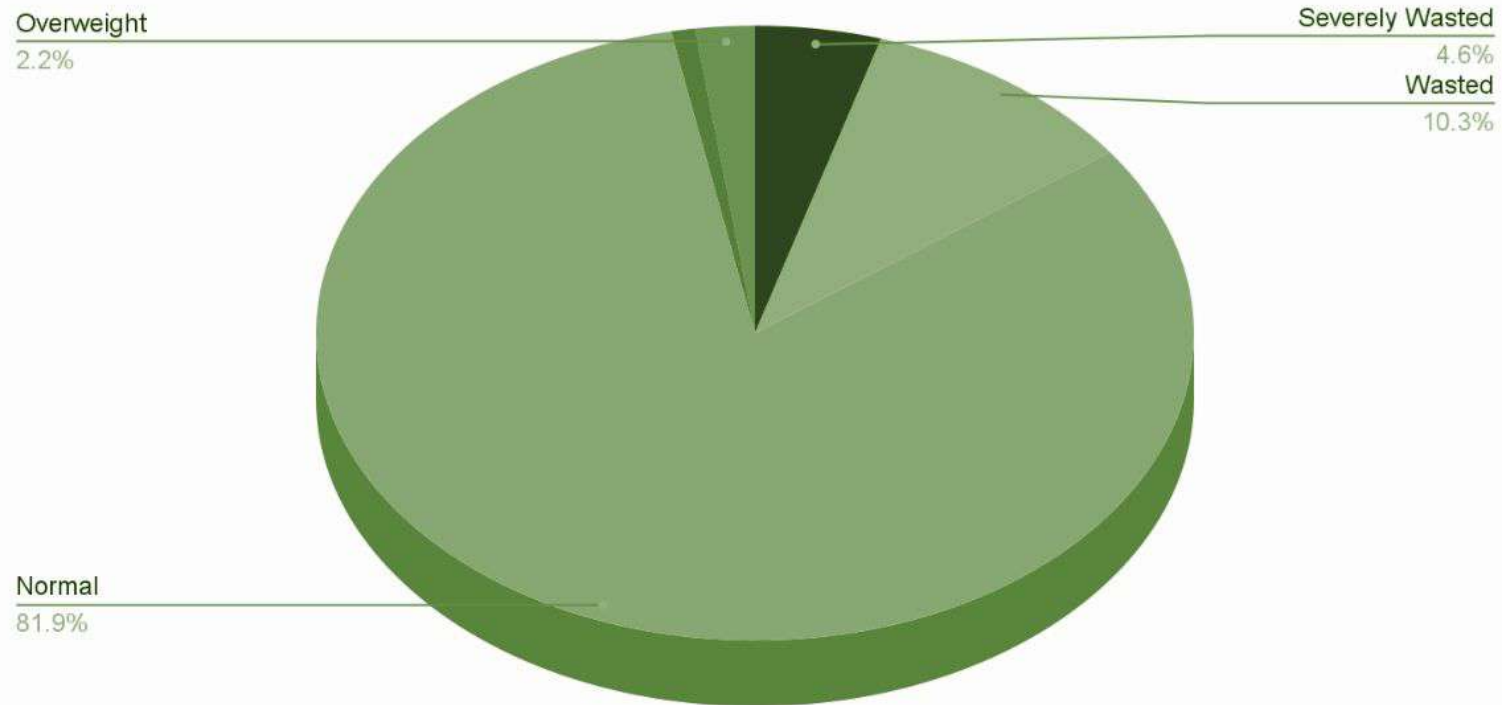
SEAMEO
SEARCHA



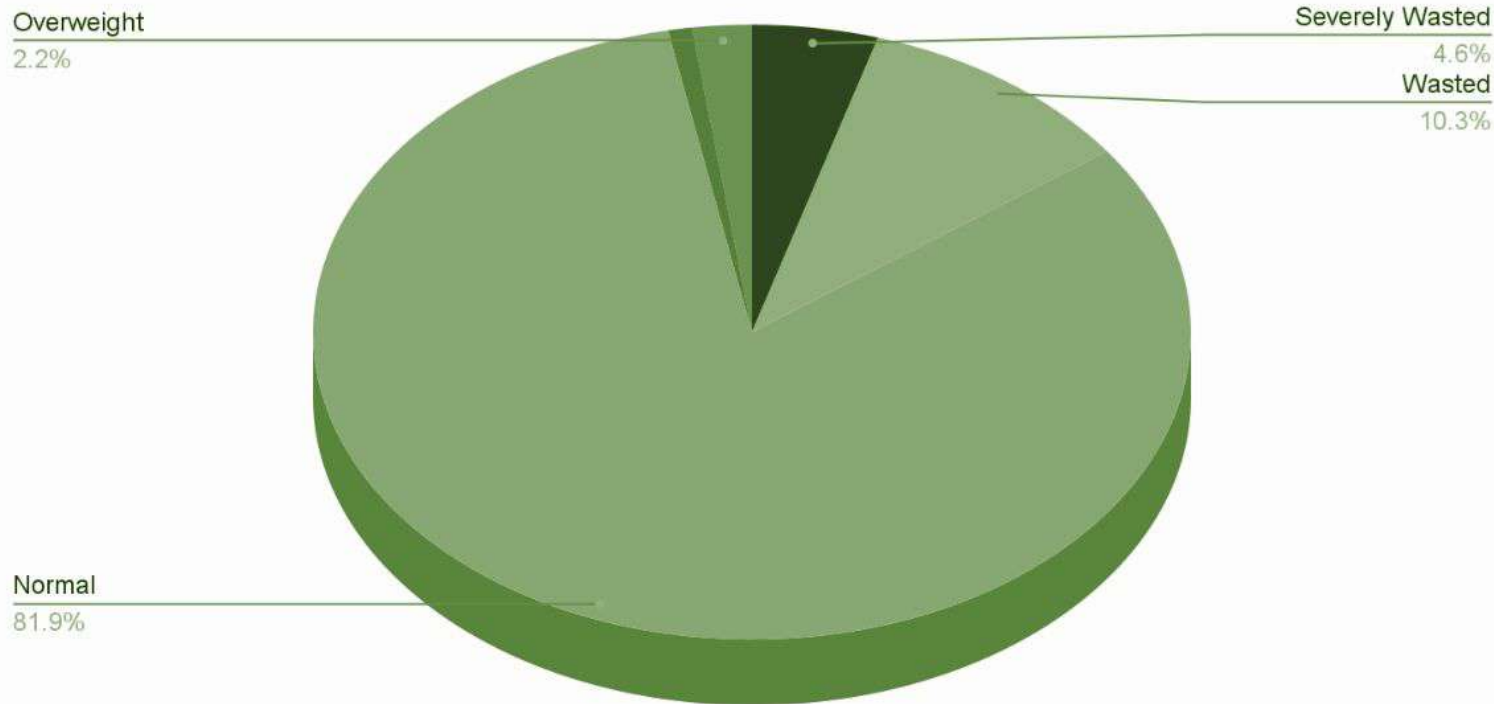
REGIONAL POLICY FORUM
From Farms to School:
Towards Sustainable and Inclusive
School-Based Food and Nutrition
Programs in Southeast Asia
24-25 April 2023 | Alabang, Philippines



| Malnutrition Status in PH



| Malnutrition Status in PH



Severely Wasted:	392,233
Wasted:	874,239
Normal:	6,923,850
Obese:	73,764
Overweight:	185,360
Total:	8,449,446

Out of 8.8 million learners assessed (Based on 2021 Nutritional Assessment)

- 14.99% - wasted and severely wasted
- 3.07% - obese and overweight



| Policy and Institutional Mechanisms



REPUBLIC ACT NO. 11148:
"Kalusugan at Nutrisyon ng
Mag-Nanay Act"

REPUBLIC ACT NO. 11037:
"*Masustansyang Pagkain para
sa Batang Pilipino Act*"
(Nutritious Food for the Filipino
Children Act)



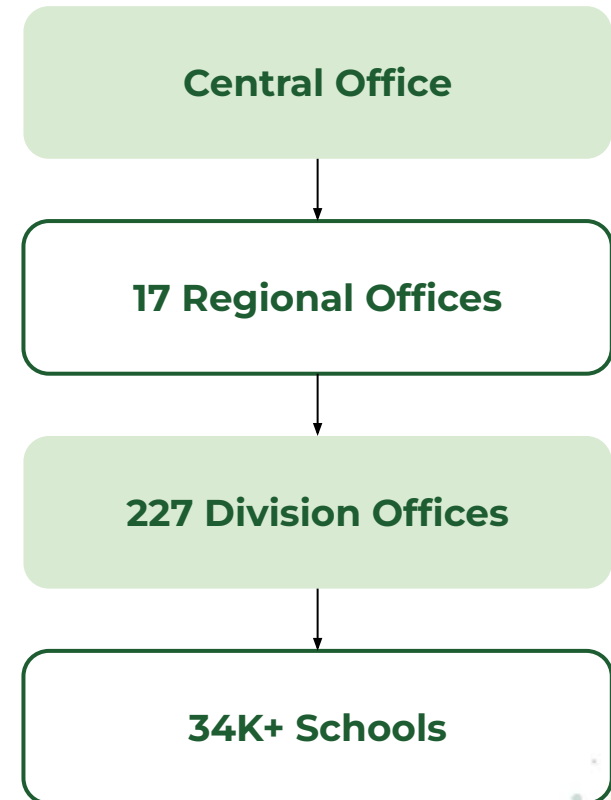
| Policy and Institutional Mechanisms



REPUBLIC ACT NO. 11148:
"Kalusugan at Nutrisyon ng
Mag-Nanay Act"

REPUBLIC ACT NO. 11037:
"Masustansyang Pagkain para
sa Batang Pilipino Act"
(Nutritious Food for the Filipino
Children Act)

DepEd Mechanism



| Policy and Institutional Mechanisms



REPUBLIC ACT NO. 11148:
"Kalusugan at Nutrisyon ng
Mag-Nanay Act"

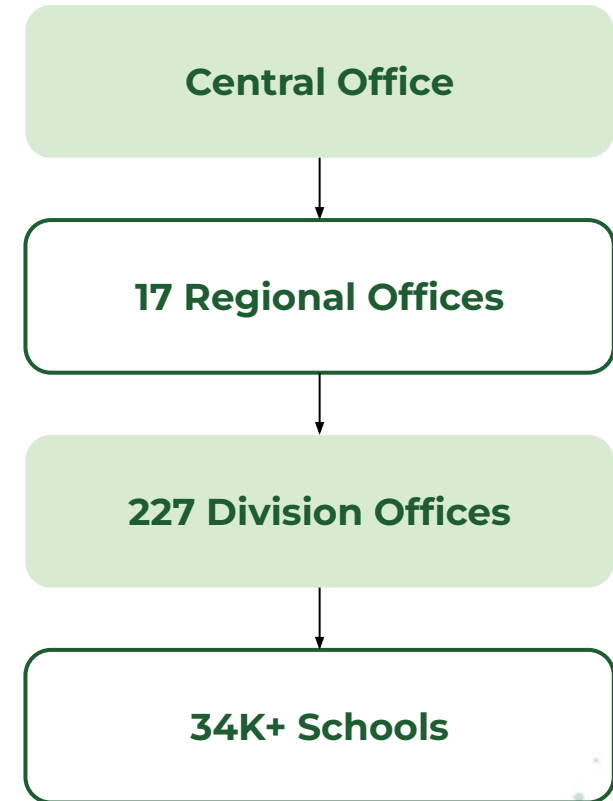
REPUBLIC ACT NO. 11037:
"Masustansyang Pagkain para
sa Batang Pilipino Act"
(Nutritious Food for the Filipino
Children Act)

Major institutions
involved:



LGUs

DepEd Mechanism



| Integrated School Nutrition Model



273 Lighthouse
Schools



41K+ School Gardens



34K+ Public Schools in
SBFP



| Integrated School Nutrition Model



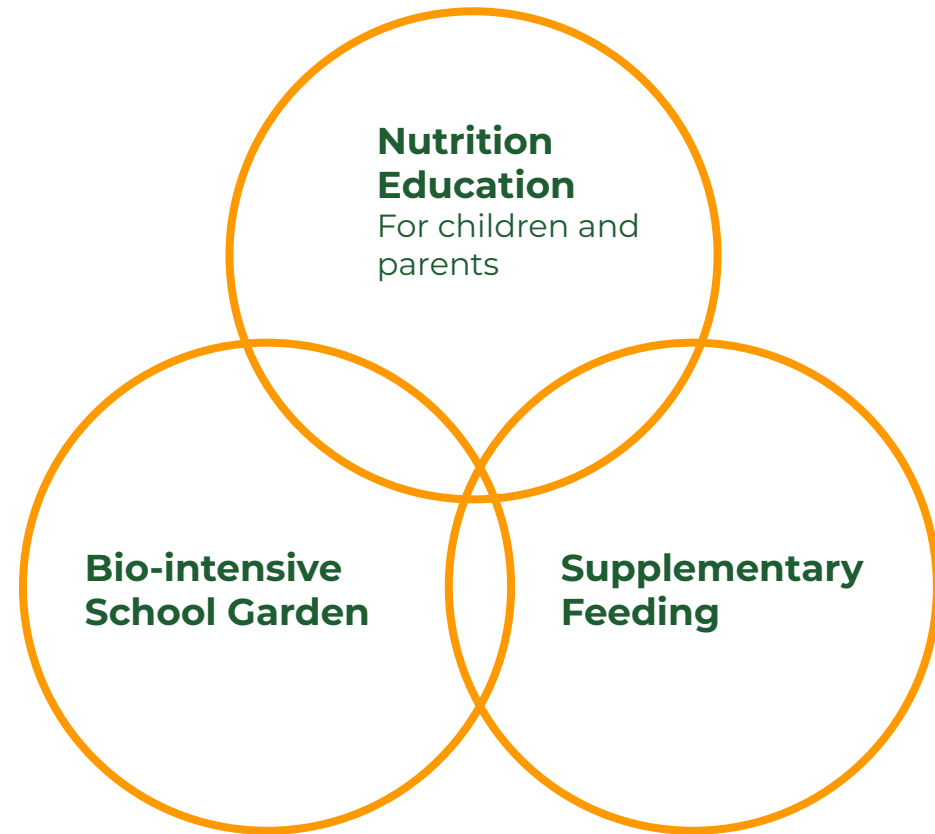
273 Lighthouse Schools



41K+ School Gardens



34K+ Public Schools in SBFP



Integrated School Nutrition Model



273 Lighthouse Schools



41K+ School Gardens



34K+ Public Schools in SBFP

School-home link to ensure gains from school interventions are sustained at home

Nutrition Education
For children and parents

Garden-based nutrition education for children and their parents

Bio-intensive School Garden

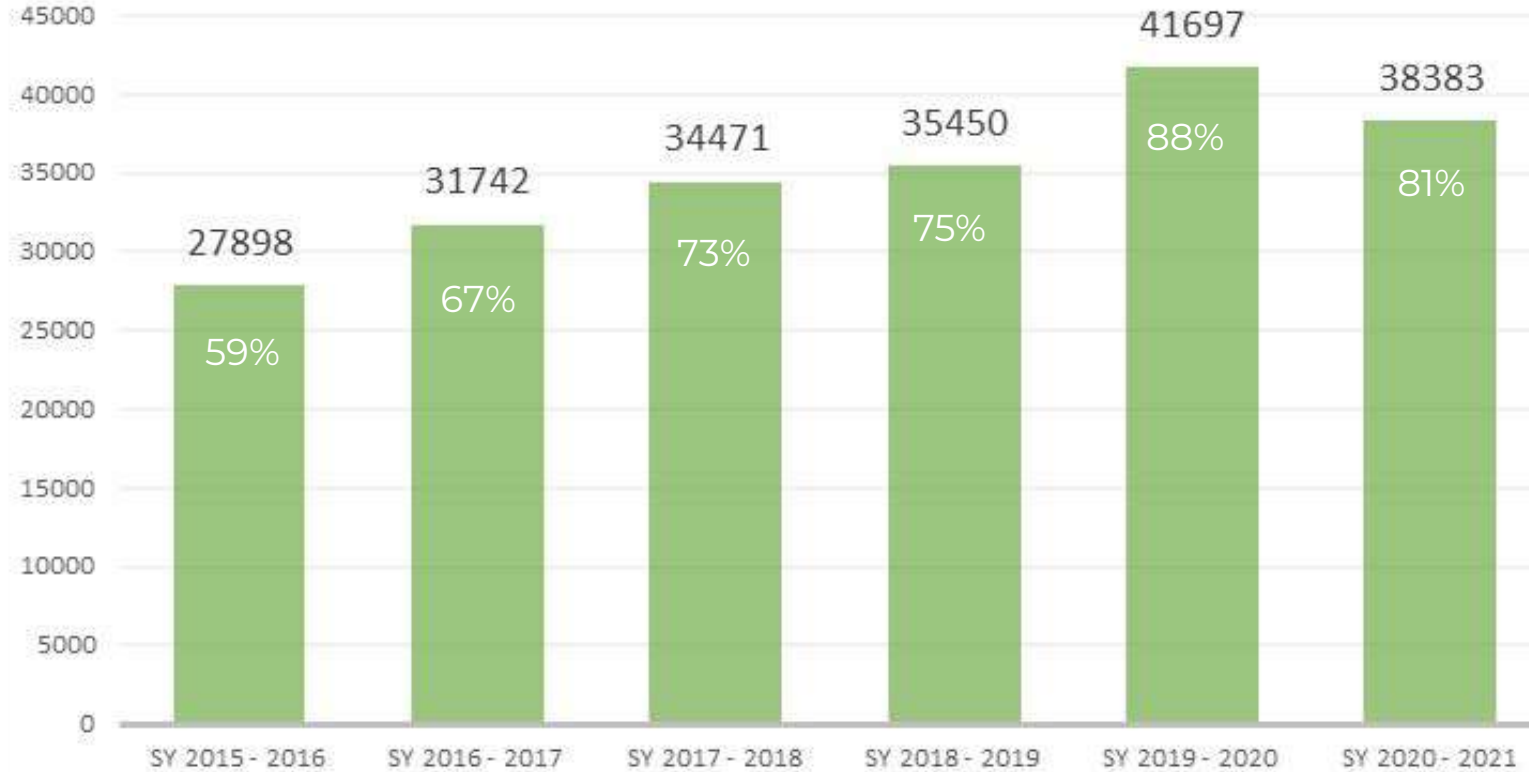
Supplementary Feeding

Garden-based nutrition education for children and their parents



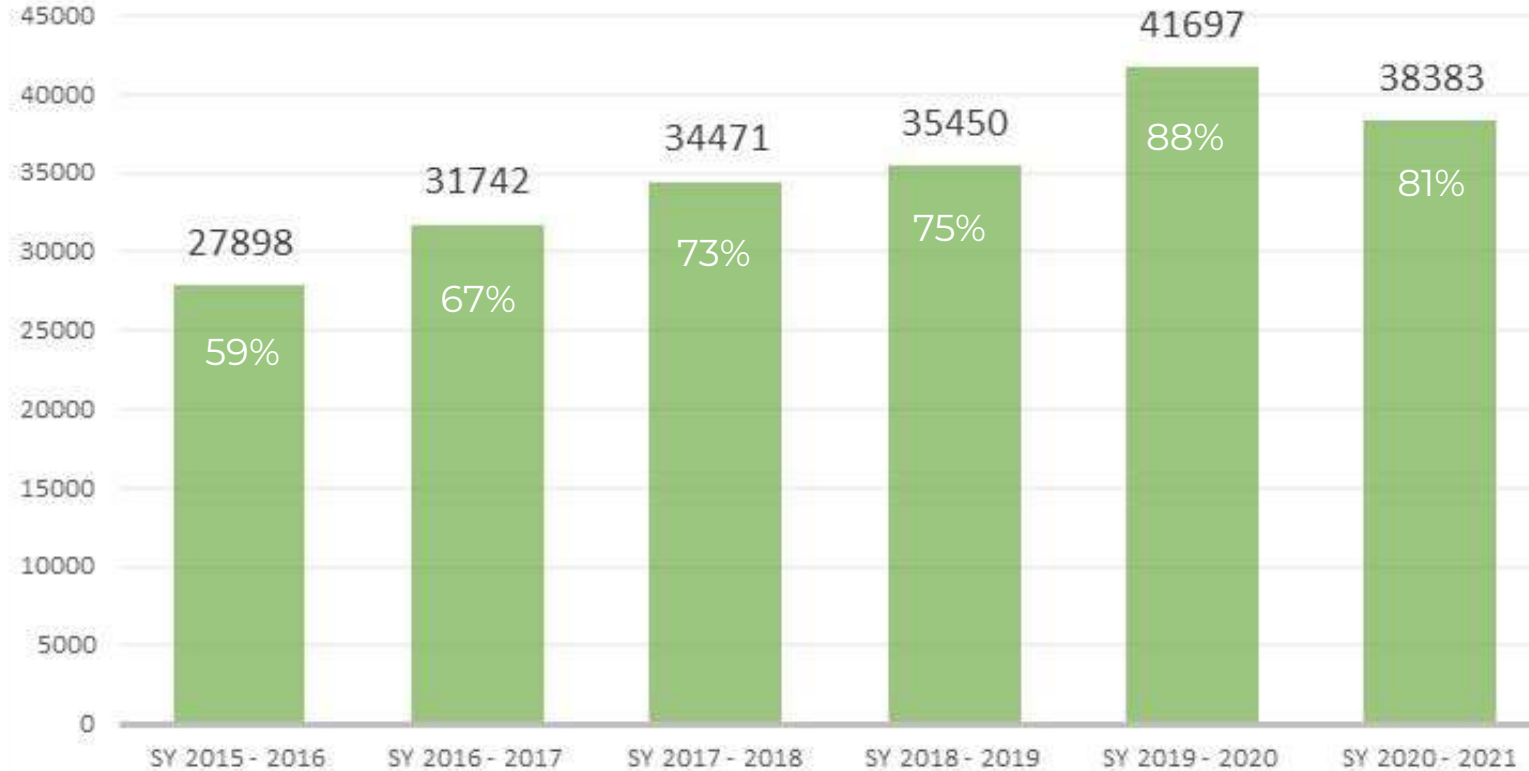
| Gulayan sa Paaralan

NO. OF SCHOOL GARDENS (2020 - 2021)



| Gulayan sa Paaralan

NO. OF SCHOOL GARDENS (2015 - 2021)



In partnership with the Department of Agriculture (DA), **DepEd Memorandum No. 293, s. 2007** was issued to encourage both public elementary and secondary school gardens to ensure a continuous supply of vegetables for school feeding and establishing the **Gulayan sa Paaralan Program (GPP)**.

Total No. of Schools:
47,188



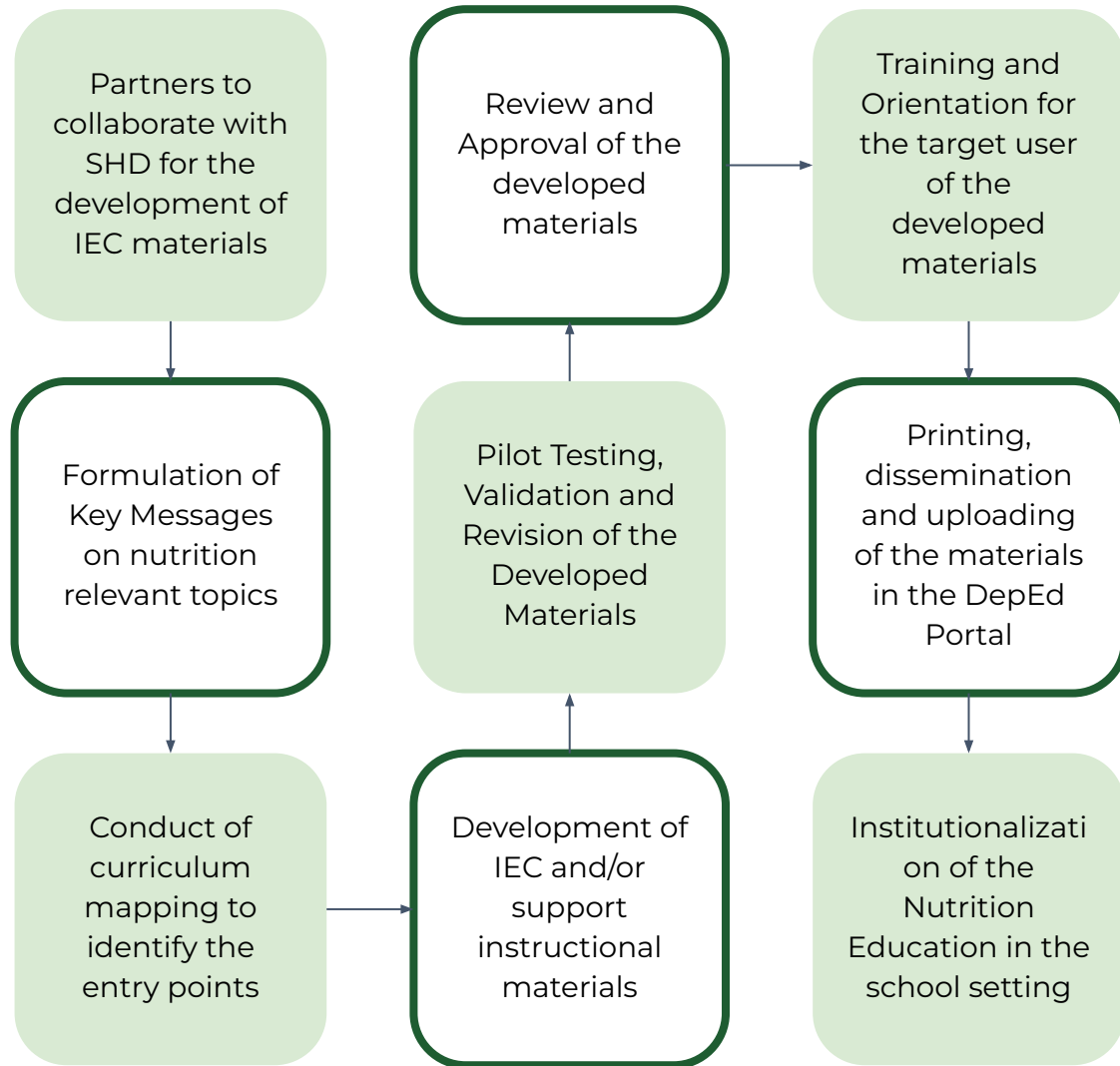
Nutrition Education

Grading Period	Grade 1	Grade 2	Grade 3	Grade 4	Grade 5	Grade 6	Grade 7	Grade 8	Grade 9	Grade 10
First Quarter	Nutrition	Personal Health/ Nutrition	Nutrition	Nutrition	Personal Health	Personal Health	Growth and Development	Family Health I	Community and Environmental Health	Consumer Health
Second Quarter	Personal Health	Personal Health Prevention and Control of Diseases & Disorders	Personal Health Prevention and Control of Diseases & Disorders	Prevention and Control of Diseases & Disorders	Personal Health/ Growth & Development	Prevention and Control of Diseases & Disorders	Nutrition	Family Health II	Injury Prevention, Safety and First Aid (Unintentional Injuries)	Health Trends, Issues and Concerns (National Level)
Third Quarter	Personal Health	Family Health	Consumer Health	Substance Use and Abuse	Substance Use and Abuse	Consumer Health/ Environmental Health	Personal Health	Prevention and Control of Diseases and Disorders (Communicable)	Substance Use and Abuse (Drug scenario)	Health Trends, Issues and Concerns (Global Level)
Fourth Quarter	Injury Prevention, Safety and First Aid	Injury Prevention, Safety and First Aid	Injury Prevention, Safety & First Aid /Community & Environmental Health	Injury Prevention, Safety & First Aid	Injury Prevention, Safety & First Aid/Community and Environmental Health	Injury Prevention, Safety & First Aid/ Consumer Health	Injury Prevention, Safety and First Aid (Intentional Injuries)	Prevention and Control of Diseases and Disorders (Non-Communicable)	Substance Use and Abuse (Gateway drugs)	Planning for a Health Career

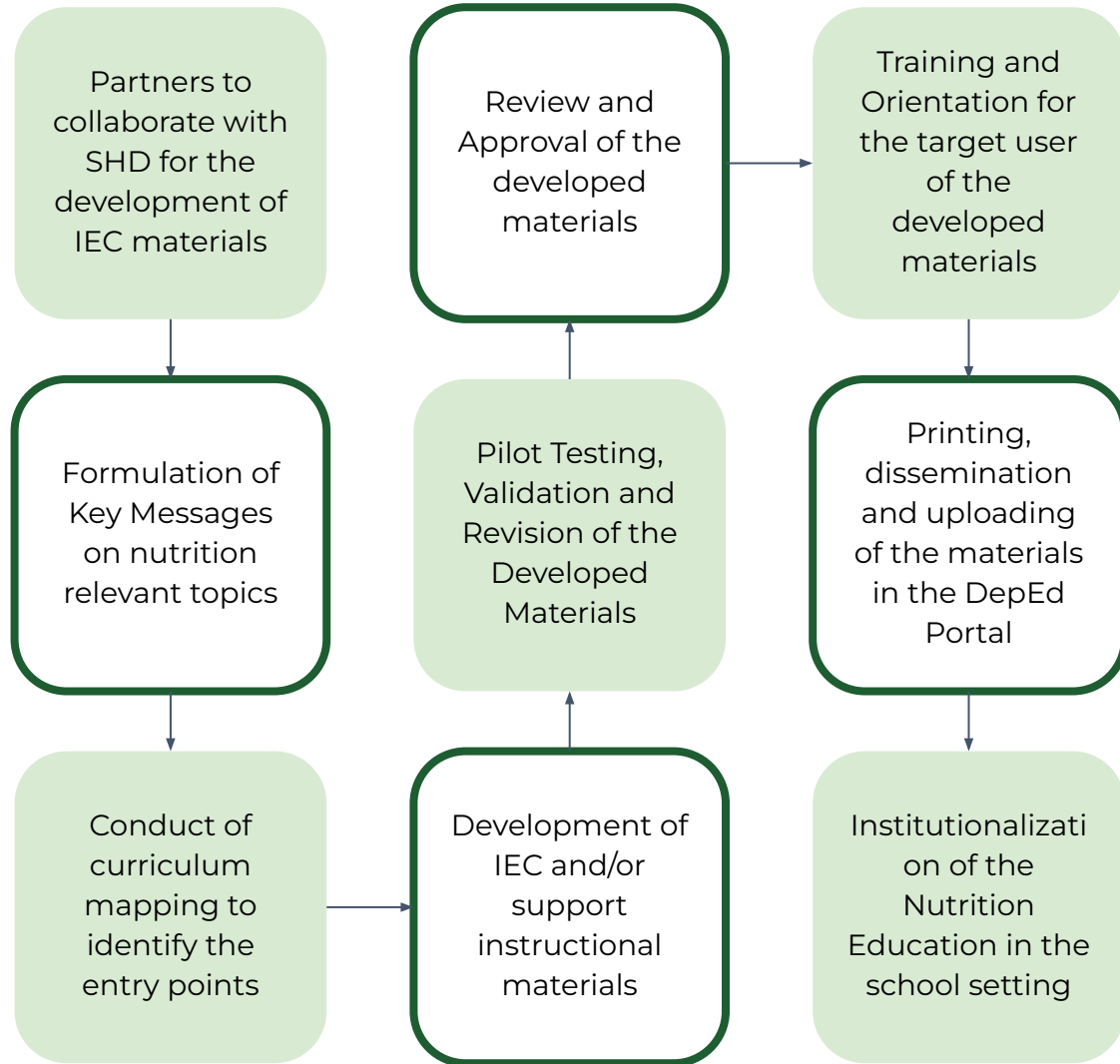
K to 12 Basic Education Curriculum



| IEC and Instructional Materials



| IEC and Instructional Materials



Mapping Competencies



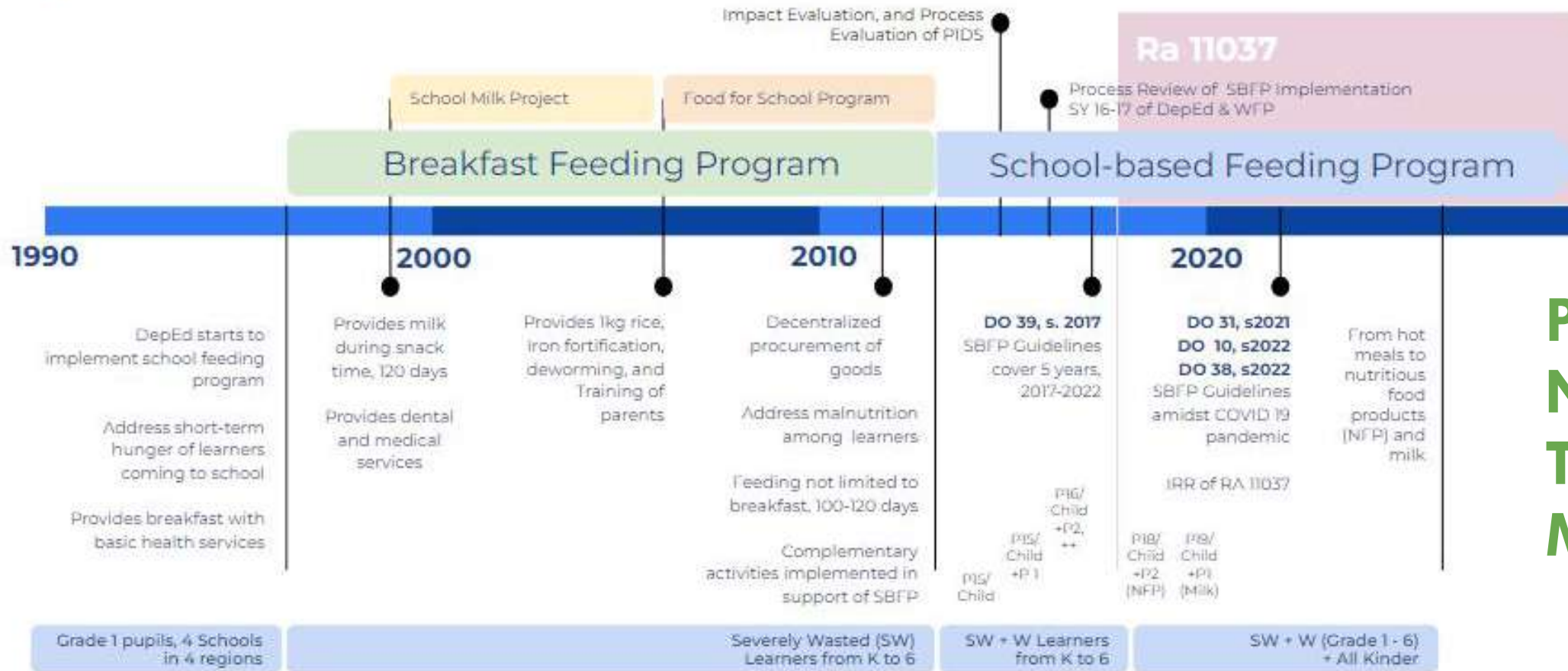
Identifying Prerequisites



Analyzing Interconnectedness



| School-Based Feeding Program



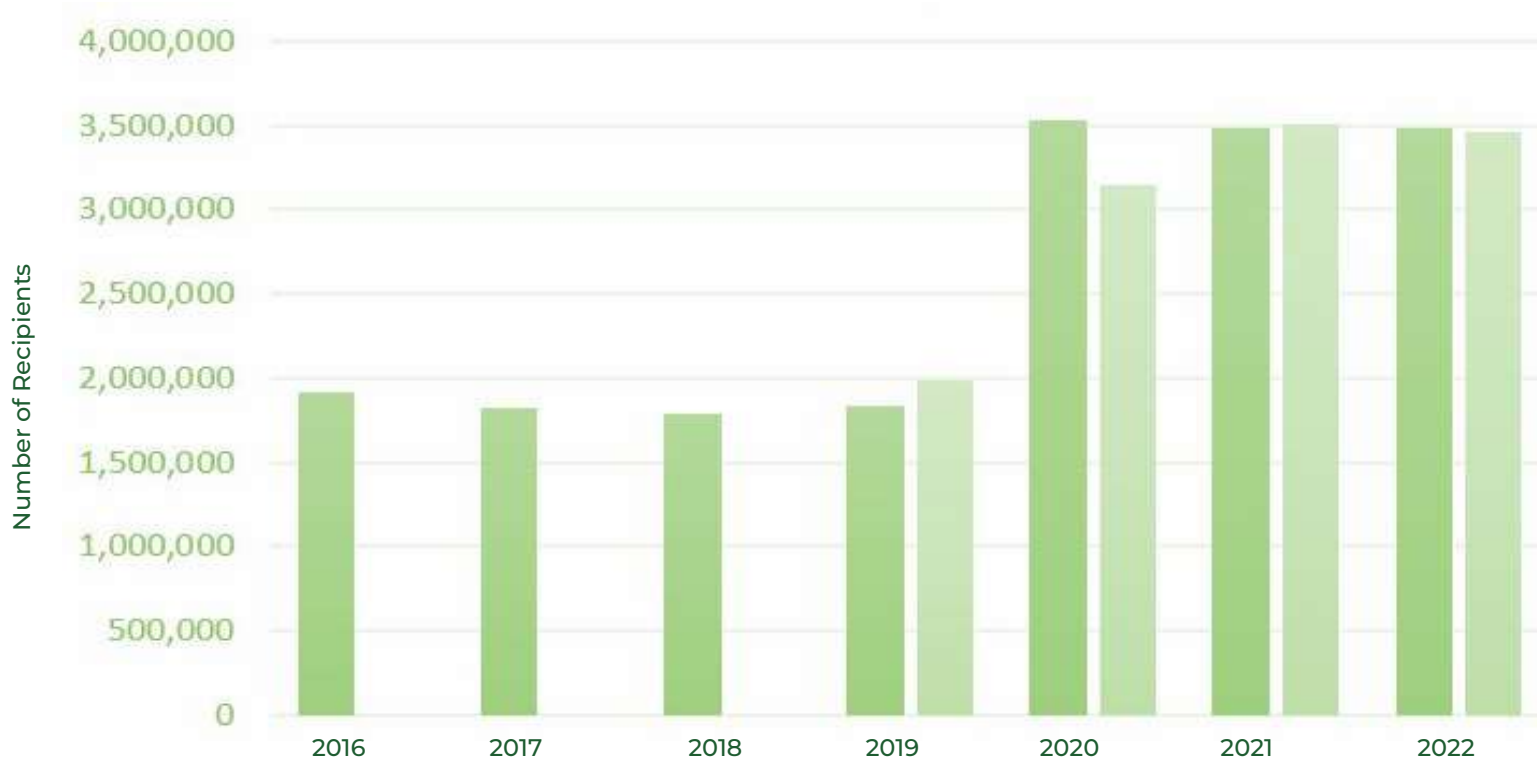
Promoting
Nutrition
Through
Meals



| School-Based Feeding Program

SBFP Recipients from 2016 - 2022

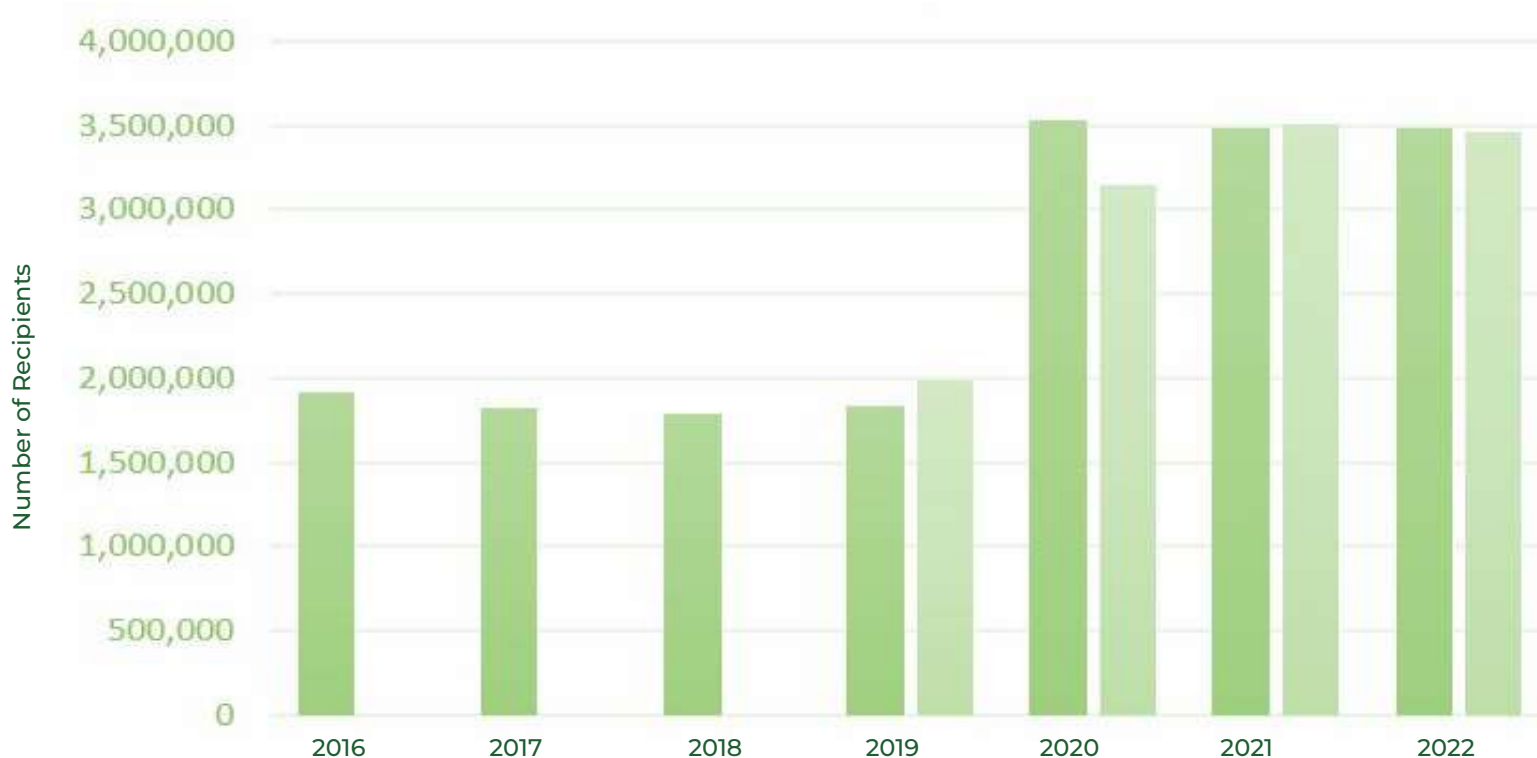
Legend: ■ Hot Meals ■ Milk



| School-Based Feeding Program

SBFP Recipients from 2016 - 2022

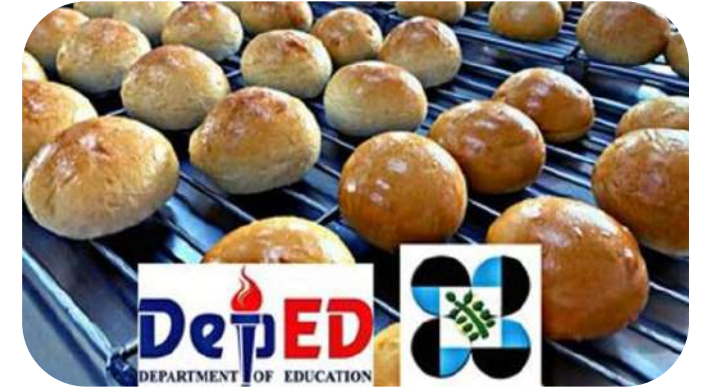
Legend: ■ Hot Meals ■ Milk



- One **intervention to address undernutrition** of school children.
- **Hot meals/nutritious food products (NFP) and milk** are provided to undernourished **Kinder and Grades 1 - 6** public school learners.
- The healthy meals provided are expected to contribute to the readiness of the learner to **participate and benefit in class, complete** their **elementary education**, and **improve** their **nutritional status**.



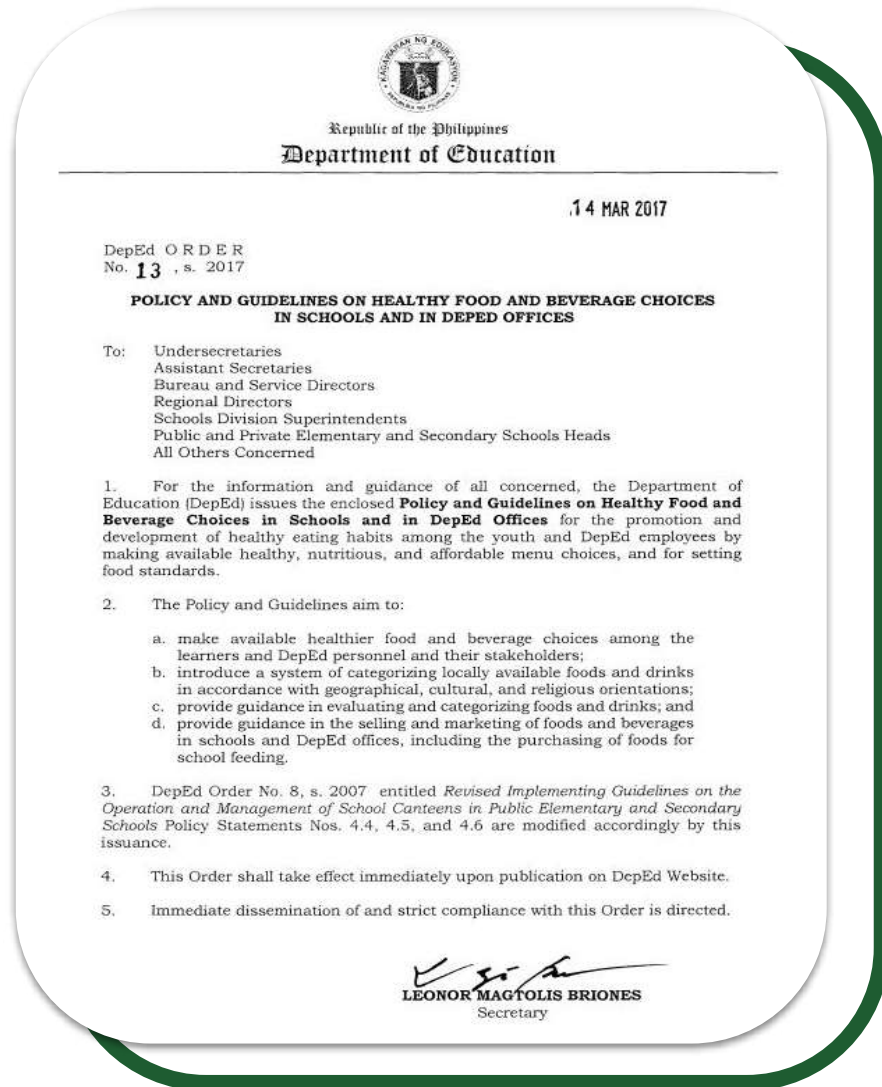
| School-Based Feeding Program



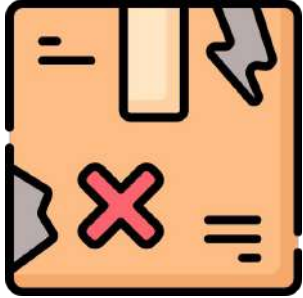
| Policy on Healthy Food Choices in DepEd

DepEd Memorandum No. 13, s. 2017

- The Policy and Guidelines on **Healthy Food and Beverage Choices in Schools and in DepEd Offices**.
- **Promotes and develops healthy eating habits** among the youth and DepEd employees by making available healthy, nutritious, and affordable menu choices, and for setting food standards.
- **Limits the marketing** of unhealthy foods and beverages at least **within 100 meters radius** of schools.



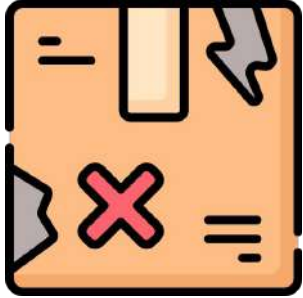
| Gaps and Challenges



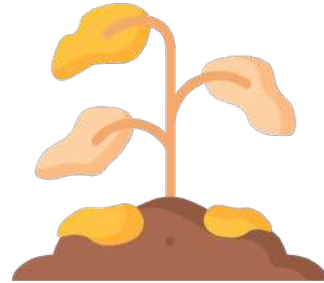
Devastated gardens and
resources



| Gaps and Challenges



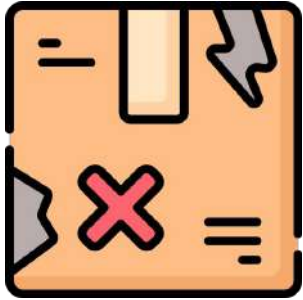
Devastated gardens and resources



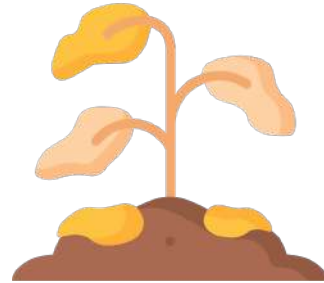
Poorly managed gardens due to COVID 19



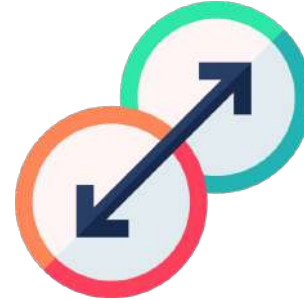
| Gaps and Challenges



Devastated gardens and resources



Poorly managed gardens due to COVID 19



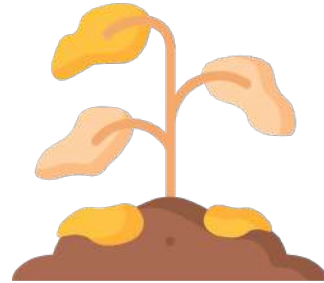
Harvests not utilized due to shift in SBFP meal provision



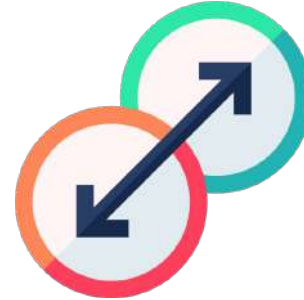
| Gaps and Challenges



Devastated gardens and resources



Poorly managed gardens due to COVID 19



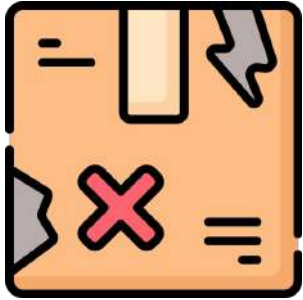
Harvests not utilized due to shift in SBFP meal provision



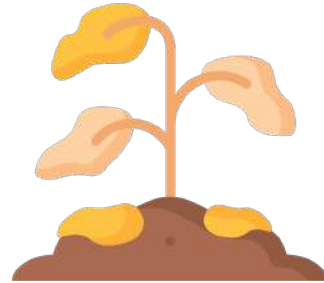
IEC materials not utilized due to distance learning



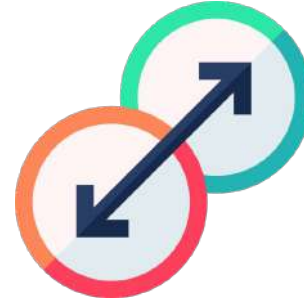
| Gaps and Challenges



Devastated gardens and resources



Poorly managed gardens due to COVID 19



Harvests not utilized due to shift in SBFP meal provision



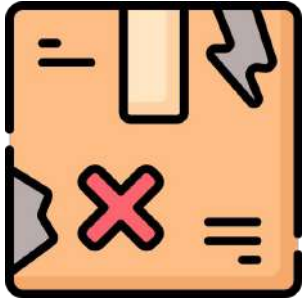
IEC materials not utilized due to distance learning



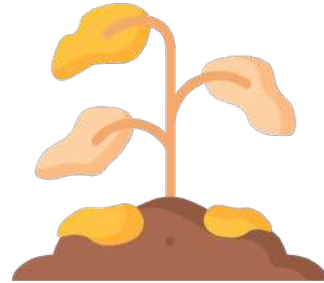
Difficulty in intensifying links of 3 program components



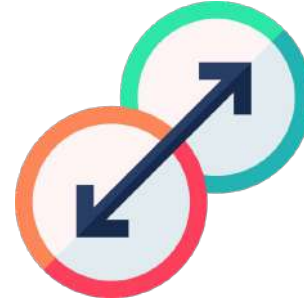
| Gaps and Challenges



Devastated gardens and resources



Poorly managed gardens due to COVID 19



Harvests not utilized due to shift in SBFP meal provision



IEC materials not utilized due to distance learning



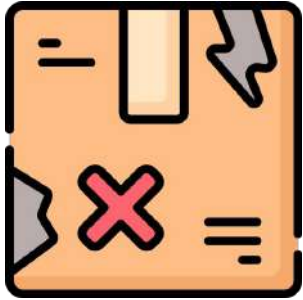
Difficulty in intensifying links of 3 program components



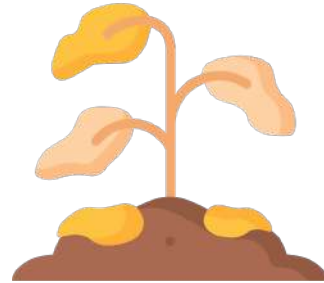
Insufficient budget allocation



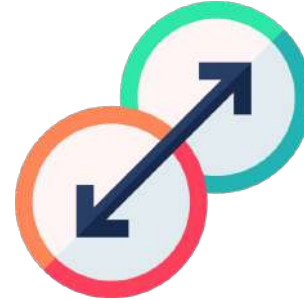
| Gaps and Challenges



Devastated gardens and resources



Poorly managed gardens due to COVID 19



Harvests not utilized due to shift in SBFP meal provision



IEC materials not utilized due to distance learning



Difficulty in intensifying links of 3 program components



Insufficient budget allocation



Change of assignment of assigned focal persons



| Ways Forward



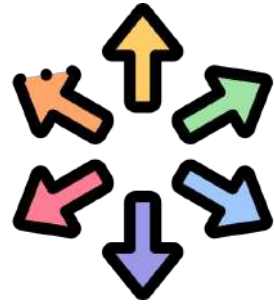
Strengthen and
Institutionalize
the Integrated
School Nutrition
Model



| Ways Forward



Strengthen and Institutionalize the Integrated School Nutrition Model



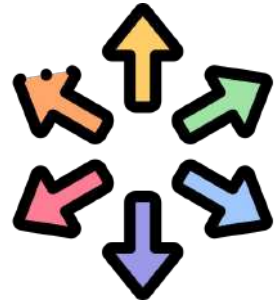
Intensify and expand the coverage of Gulayan sa Paaralan



| Ways Forward



Strengthen and Institutionalize the Integrated School Nutrition Model



Intensify and expand the coverage of Gulayan sa Paaralan



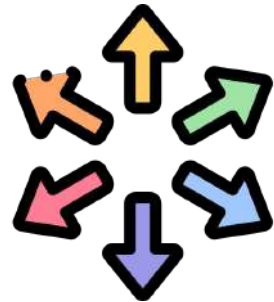
Additional funding for the School-based Feeding Program



| Ways Forward



Strengthen and Institutionalize the Integrated School Nutrition Model



Intensify and expand the coverage of Gulayan sa Paaralan



Additional funding for the School-based Feeding Program



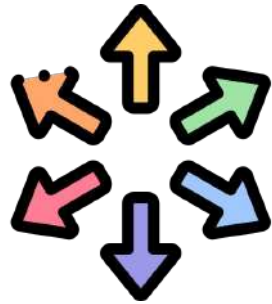
Strengthen partnership with LGUs and key stakeholders



| Ways Forward



Strengthen and Institutionalize the Integrated School Nutrition Model



Intensify and expand the coverage of Gulayan sa Paaralan



Additional funding for the School-based Feeding Program



Strengthen partnership with LGUs and key stakeholders



Institutionalize periodic reporting, monitoring, and evaluation






Thank you!



S E A M E O
SEARCA

Southeast Asian Regional Center for Graduate Study and Research in Agriculture
College, Los Baños, Laguna 4031, Philippines

 +63 (49) 536 2554; 536 2631

 post@searca.org

 /seameo.searca

 SEARCAseminars