



S E A M E O
SEARCA



REGIONAL POLICY FORUM

From Farms to School:

Towards Sustainable and Inclusive School-Based
Food and Nutrition Programs in Southeast Asia

24-25 April 2023 | Alabang, Philippines



Pathways and Mechanisms for Collaboration in Scaling the School-plus-Home Gardens (S+HG) Model: Stakeholder Identification

Miriam Caryl Carada, Ph.D.

Assistant Professor

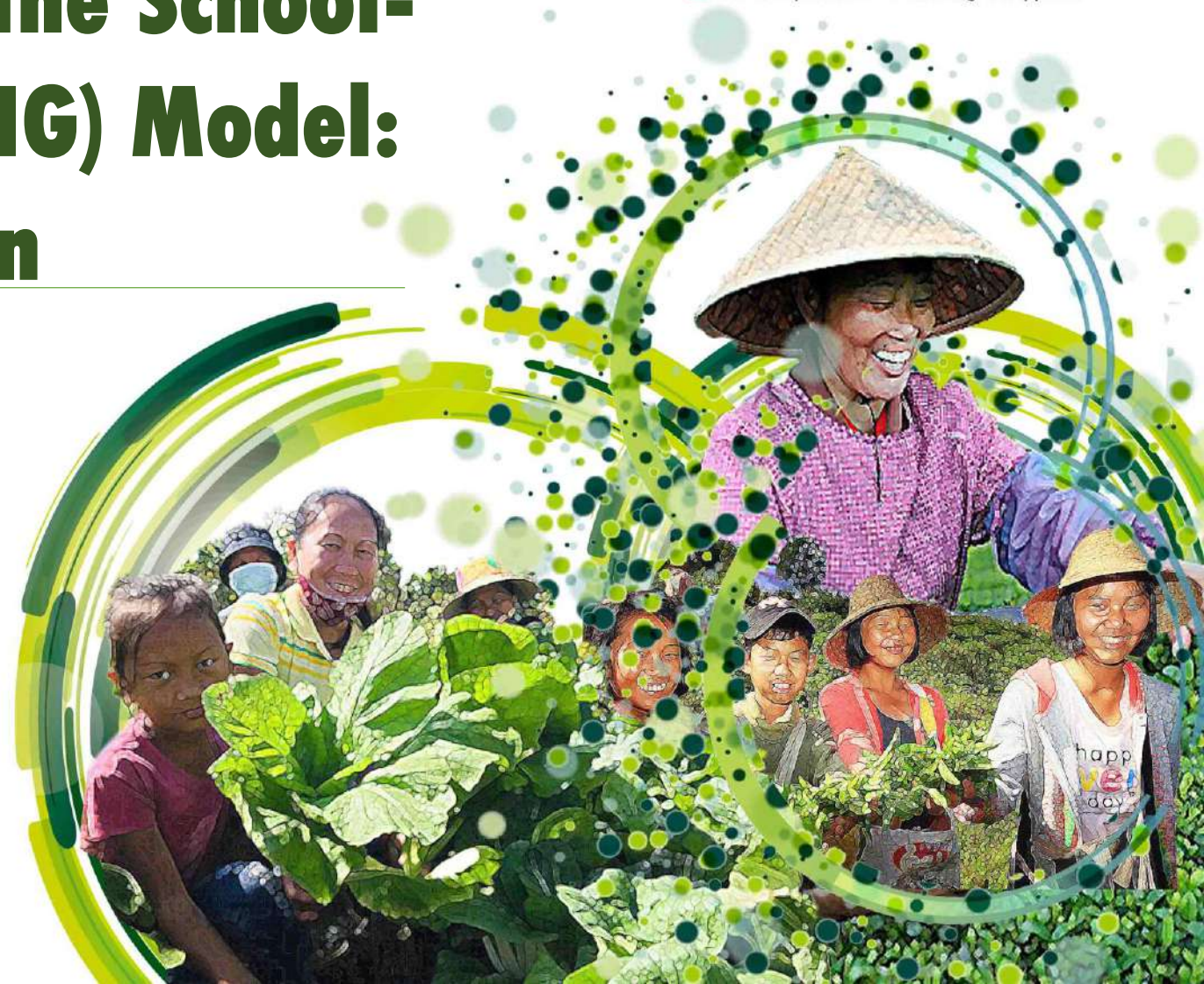
College of Public Affairs and Development

University of the Philippines Los Baños (UPLB)

Consultant, SEARCA



REGIONAL POLICY FORUM
From Farms to School:
Towards Sustainable and Inclusive
School-Based Food and Nutrition
Programs in Southeast Asia
24-25 April 2023 | Alabang, Philippines



Outline

- S+HGP Network
- S+HGP Stakeholders
- Policies

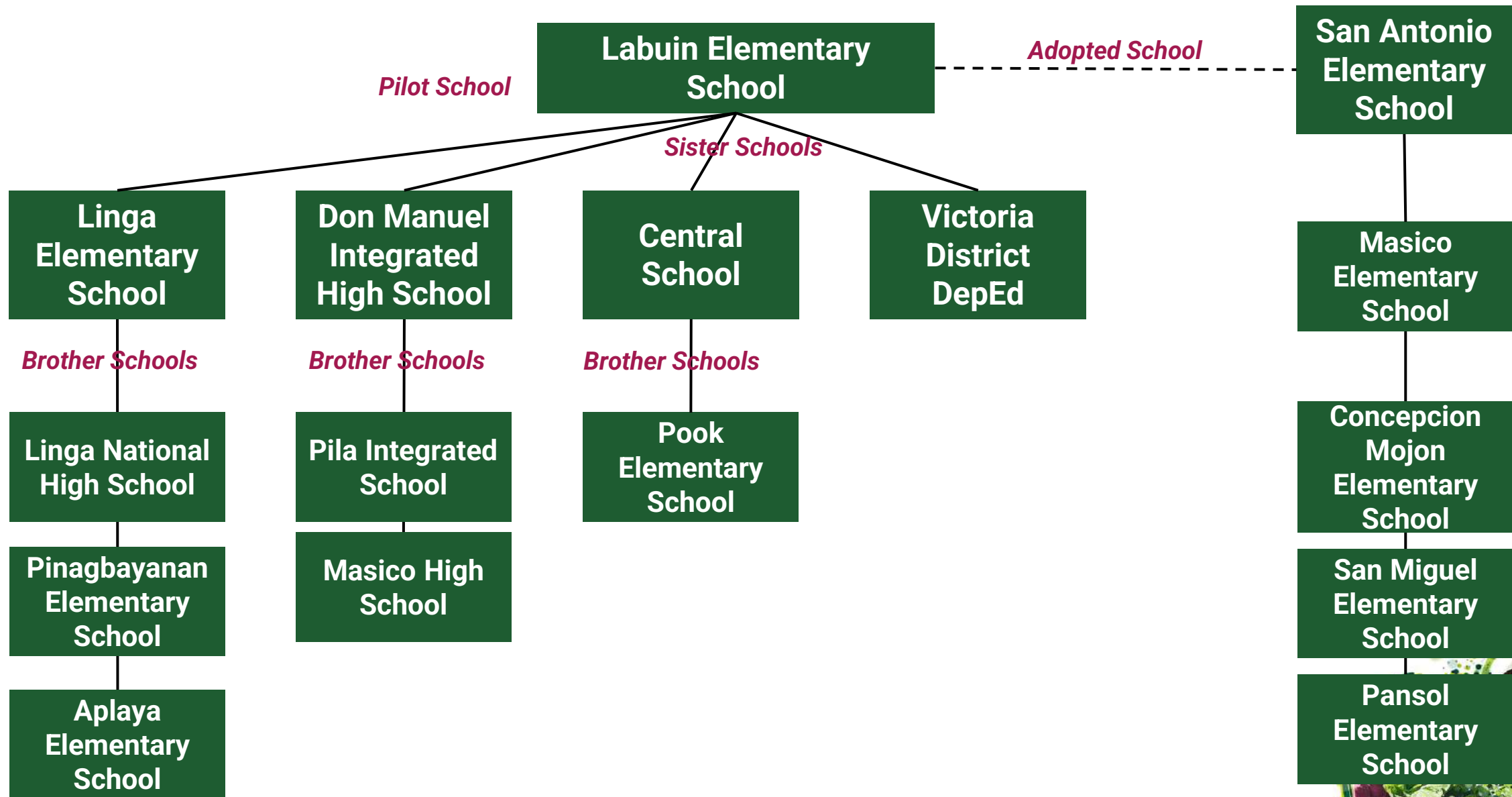


Area of the Study

- Cavinti
 - Cavinti Elementary School
 - Layasin Elementary School
 - Sumucab Elementary School
- Pila
 - Masico Elementary School
 - San Antonio Elementary School
 - Linga National High School
 - Labuin Elementary School
 - Don Manuel Rivera Memorial National High School
- Sta. Cruz
 - Sta. Cruz Elementary School
 - Sto. Angel Central Elementary School
 - Bagumbayan Elementary School



S+HGP Networks Pila, Laguna



S+HGP Networks Sta. Cruz, Laguna

Adapted School

Bagumbayan ES

Adopted School

Cavinti Elementary School

Sister Schools

| | | | | | |
|------------------------------------|-------------------------------|---------------------|--------------------------|--------------------|---|
| Sta. Cruz Elementary School | Sto. Anghel Central ES | Gatid ES | Bubukal ES | Silangan ES | Duhat ES |
| Sta. Cruz Integrated HS | Pagsawitan ES | Patimbao ES | Sto. Angel Sur ES | San Juan ES | San Jose ES |
| Callios ES | Sto. Anghel Norte ES | Santisima ES | Oogong ES | Laguna SH | Felisisimo San Luis Integrated National HS |

Pedro Guevarra Memorial National HS

Pilot School



S+HGP Networks Cavinti, Laguna

Bagumbayan ES

Adopted School

Cavinti
Elementary
School

Sister Schools

Bulajo ES

Bukal ES

Cansuso ES

Calminue ES

Calminue HS

Bukal HS

Inao-awan ES

Lumot EL

Lumot NHS

Talaongan
East ES

Talaongan
West ES

Layasin ES

Cavinti
Integrated
NHS

Sisilmin ES

Burol ES

Sumucab ES

Paowin ES

Udia ES

Layug ES



Stakeholders: Cavinti, Laguna

| SUMUCAB ELEM | LAYASIN ELEMENTARY SCHOOL | CAVINTI ELEMENTARY SCHOOL |
|--|---------------------------------|--|
| Parent Teacher Association | 4Ps | CBK Power Corporation |
| 4PS | Parent Teacher Association | Department of Agriculture (Cavinti) |
| Local Government Units | Cavinti Municipal Nursery | Parent Teacher Association |
| Health and Emergency Response Team (BHERT) | Alabang Rotary Club | 4Ps |
| | Sangguniang Barangay ng Layasin | BHERT |
| | Samahan sa Piling Mo | Rotary Club of Alabang and Cavinti |
| | Sangguniang Kabataan ng Layasin | Department of Agriculture (Provincial) |
| | Samahang Tabakk | SEARCA |
| | Disaster | JOVALDO |
| | SEARCA | Sangguniang Brgy. (Duhat and Banco) |
| | Sa Piling Mo | Local Government Unit |
| | Tabakk | Alumni |
| | | Soledad Villanueva |



Stakeholders: Pila, Laguna

| LABUIN ES | SAN ANTONIO ES | LINGA NHS | MASICO ES | DON MANUEL INTEGRATED |
|---|-------------------------|---|---|------------------------------|
| SEARCA | GPTA | Labuin ES | Rotary Club Pila | MSWD (4Ps Beneficiaries) |
| UPLB | 4Ps | Pila District ATA Group | Eagels Club Makiling Pila | Barangay Officials |
| Regalo ng Kulit Foundation Inc | Local Government Unit | Municipal Agriculture Office | Department of Agriculture | Municipal Agriculture Office |
| Barangay Officials | Barangay Officials | Municipal Mayor and SB Members | Bureau of Fisheries and Aquatic Resources | Parents |
| LGU's | NGOs | Barangay Officials | Municipality of Pila | NGOs |
| MAO | Dr. Rolando Evangelista | Parents and 4Ps Members | Roqueza Farm | LGU |
| Provincial Agriculture Office | Mildred Araneta | Alumni Stakeholders | Pila District | Faculty and Staff |
| GPTA Teachers | Gil Garcia | Tau Gamma Phil. Linga Pinagbayanan | SEARCA | |
| Bureau of Fisheries and Aquatic Resources | Joey Gamboa | Bureau of Fisheries and Aquatic Resources | | |
| Alumni Stakeholders | Crizelda Hierras | Robina | | |
| | Roan Villarín | | | |



Stakeholders: Sta. Cruz, Laguna

| STA. CRUZ ELEMENTARY SCHOOL | SANTO ANGHEL CENTRAL ELEMENTARY SCHOOL | BAGUMBAYAN ELEMENTARY SCHOOL |
|-------------------------------------|---|--|
| Municipal Agriculture | General Parent Teachers Association | General Parent Teachers Association |
| Mayor | Municipal Agriculture Office | Bureau of Jail Management and Penology |
| General Parent Teachers Association | 4Ps | Local Government Unit |
| Parents | Tulong Panghanapbuhay sa Ating Displaced Worker (TUPAD) | Department of Agriculture |
| Teachers | Sitio Neighborhood Organization (SNO) | International Institute of Rural Reconstruction (IIRR) |
| Learners | Local Government Unit | SEARCA |
| Brgy. Officials | Brgy. Officials | |
| | Parents | |



Key Stakeholders

- Barangay (Village) Officials
 - Provides man power and support
- Municipal/City Government
 - Provides financial assistance
- Municipal Agriculture Office (MAO)
 - Provides garden inputs (seeds, fertilizers), tools, trainings, and other assistance
- Parents- Teachers Association (PTA)
 - Helps in maintenance of the garden
- Pantawid Pamilyang Pilipino Program (4Ps) Members
 - Helps in maintenance of the garden



Other Stakeholders

- Other government agencies (i.e. Bureau of Fisheries and Aquatic Resources)
 - Provides inputs, tools, fingerlings...
- NGOs (i.e. Rotary Club)
 - Provides financial support
- Private Individuals/Alumni
 - Provides financial support
- Tulong Panghanapbuhay sa Ating Displaced Worker (TUPAD)
 - Helps in maintenance of the garden



Stakeholders: Parent Teacher Association (PTA)

- Mechanism for effecting the role of parents as an indispensable element of educational communities
- **DepEd Order No. 54, s. 2009** on the Revised Guidelines Governing Parents-Teachers Association (PTAs) at the School Level
- **The Child and Youth Welfare Code- Article 77:**
 - Parent-Teacher Associations – Every elementary and secondary school shall organize a parent-teacher association for the purpose of providing a forum for the discussion of problems and their solutions, relating to the total school program, and for insuring the full cooperation of parents in the efficient implementation of such program.
 - All parents who have children enrolled in a school are encouraged to be active members of its PTA, and to comply with whatever obligations and responsibilities such membership entails.



Stakeholders: Pantawid Pamilyang Pilipino Program (4Ps)

- Based on **Republic Act no. 11310**: An Act Institutionalizing the 4Ps
- The State shall promote a just and dynamic social order thereby uplifting its citizens and marginalized sectors from poverty through policies that provide adequate social services, promote full employment, a rising standard of living, and an improved quality of life for all.
- The national poverty reduction strategy and a human capital investment program that provides conditional cash transfer to poor households for a maximum period of seven (7) years, to improve the health, nutrition and education aspect of their lives.



Stakeholders: Tulong Panghanapbuhay sa Ating Disadvantaged/Displaced Workers (TUPAD)

Community-based package of assistance that provides emergency employment for displaced workers, underemployed and seasonal workers, for a minimum period of 10 days, but not to exceed a maximum of 30 days, depending on the nature of work to be performed.

Only the following types of projects can be supported with such assistance

- Social community projects, such as repair, maintenance, and/or improvement of common public facilities and infrastructure such as schools and health centers, debris clearing, de-clogging of canals, debris segregation and materials recovery, stockpiling and clearing
- Economic community projects like repair, maintenance and/or rehabilitation of farm-to-market roads, bridges, post-harvest facilities, public markets and common service facilities such as production and display centers, fishports
- Agro-forestry community projects, such as tree planting, seedling preparation, and reforestation



Policies

- Republic Act no. 11037
 - Masustansyang Pagkain Para Sa Batang Pilipino Act
 - A national feeding program to address hunger and nutrition among filipino children
- DepEd Memorandum No. 293, s. 2007 Gulayan sa Paaralan
- DILG MC 2023-001 Halina't Magtanim ng Prutas at Gulay (HAPAG) sa Barangay Project
 - Establishment of community gardens (January 2023)






Thank you!




S E A M E O
SEARCA

Southeast Asian Regional Center for Graduate Study and Research in Agriculture
College, Los Baños, Laguna 4031, Philippines

 +63 (49) 536 2554; 536 2631

 post@searca.org

 /seameo.searca

 SEARCAseminars