

Engaging with Academia and Research Institutions (ARIs) to support Family Farmers and Food System Transformation During and Post COVID-19 Pandemic in Asia

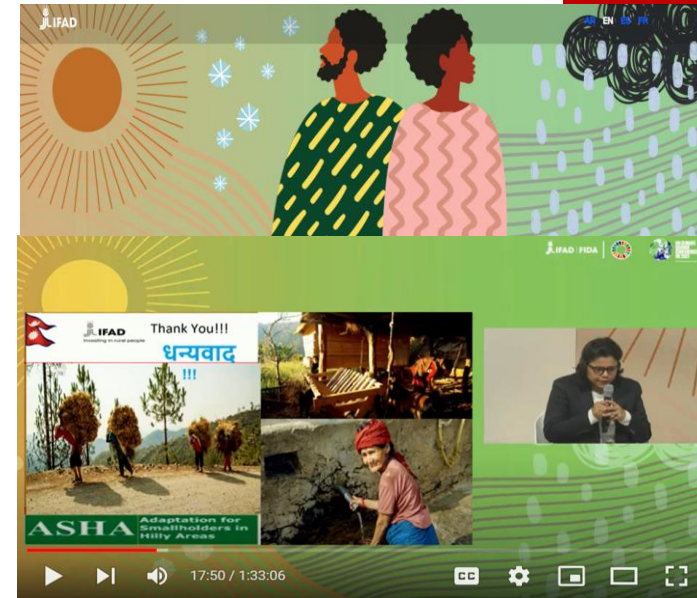


With technical assistance from the FAO Regional Office for Asia and the Pacific

Scaling community driven agro-ecological transitions in collaboration with extension systems, research and farmers organizations



Marie-Aude Even (IFAD),
Suzanne Phillips (FAO),
Katuscia Fara (WFP)



Scaling-up community driven innovations for inclusive climate change adaptation

Building on collective paper & events organized @AF2021, OFE2021 and COP26 with *Doina Popusoi, Ilaria Firmain, Malu Ndavi from IFAD, Suzanne Philipps and Anne Sophie Poisot, FAO-FFS, Rasheed Sulaiman AESA and Crisp (centre for policy), Nicole Harari Wocat/CDE, Leigh Winowiecki (ICRAF), Emmanuel Jouve (independant international consultant), Katuscia Fara, WFP IFAD project Shila Tapa (Asha, Nepal), Ashish Anand (India, JTELP)*



OUTLINE

1. Overview of paper & community driven approaches
2. FAO-FFS experience
3. Lessons learnt on scaling
4. WFP experience in digital innovations to empower community driven innovations



Diversity of CC issues & biodiversity requires CDD process



Diverse farmers & intra-HH differences

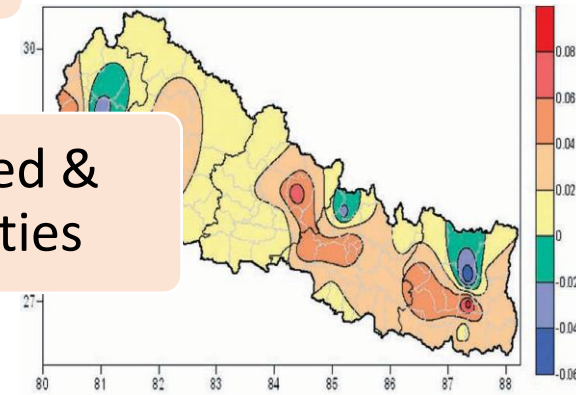
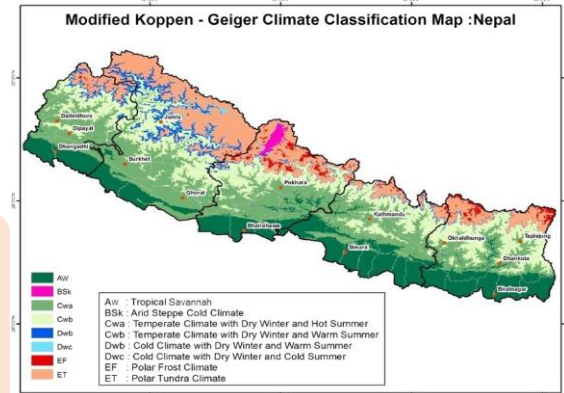
Solutions must be sustainable, build on ecosystems & biodiversity

Diverse agro-eco system & different enabling environment

CC impacts :locally specific & variable in time

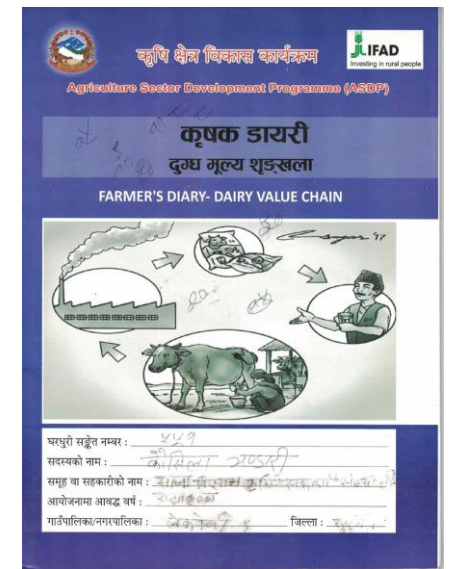
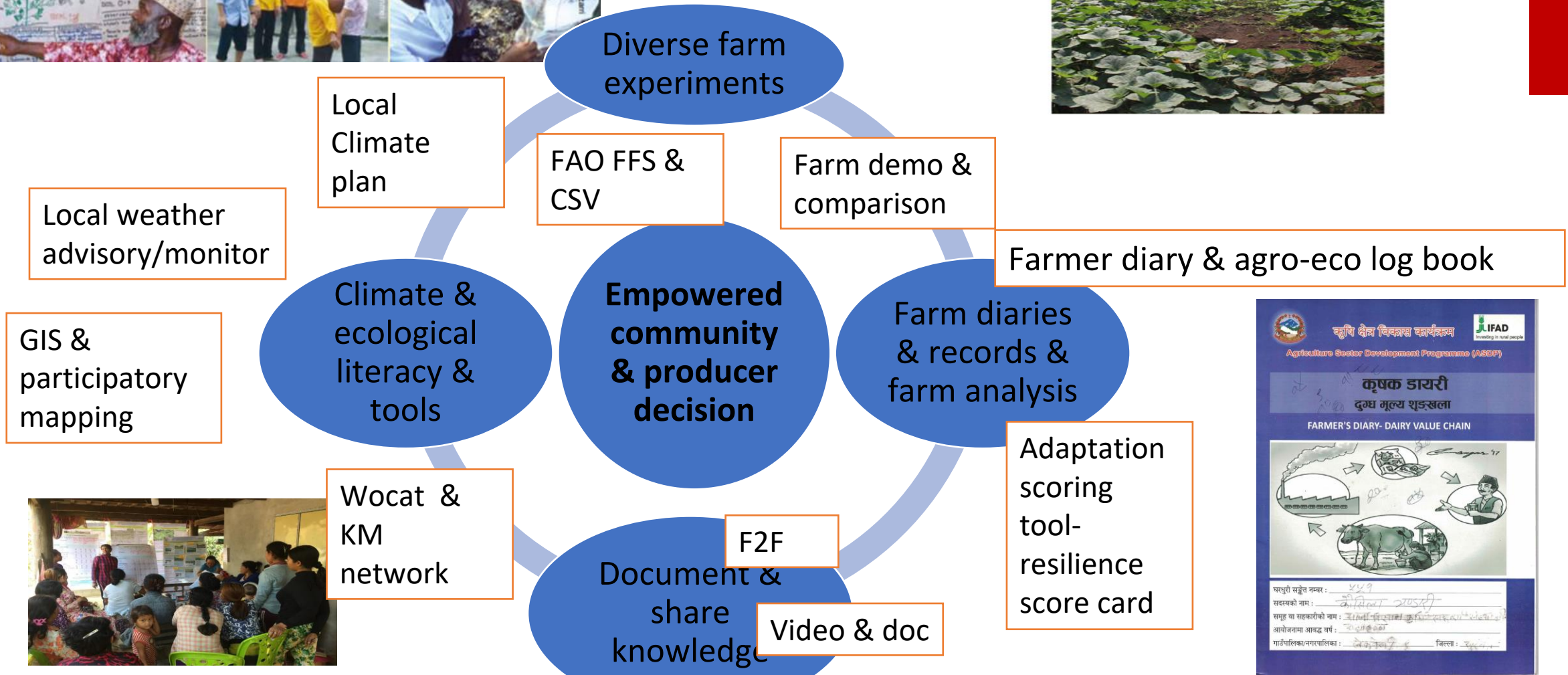
Need to empower community driven adaptation!

Solutions must be owned & sustained by communities



Community driven approach essential to empower community & farmer driven adaptation to drive locally relevant, owned and agile climate change adaptation

Diversity of approach to empower community to identify locally relevant climate adaptation



Require important investment in technical & social capacities

JTELP India IFAD: How to implement localized & differentiated weather planning & AE adoption at scale?

Ashish Anand JTELP India



Investing in rural people

Encouraged Small & Localised farm equipment based on the available resources -

Lessons for scale

- Scale: 211,000 HH & replicated
- Doubling income, cultivated land
- TIME to empower communities
- Blend science & local KM to co-develop locally relevant crop planning options
- Inclusive last mile delivery by “Krishi Mitra” & youth groups
- Digital innovations

Strategies and back up plan to ensure success

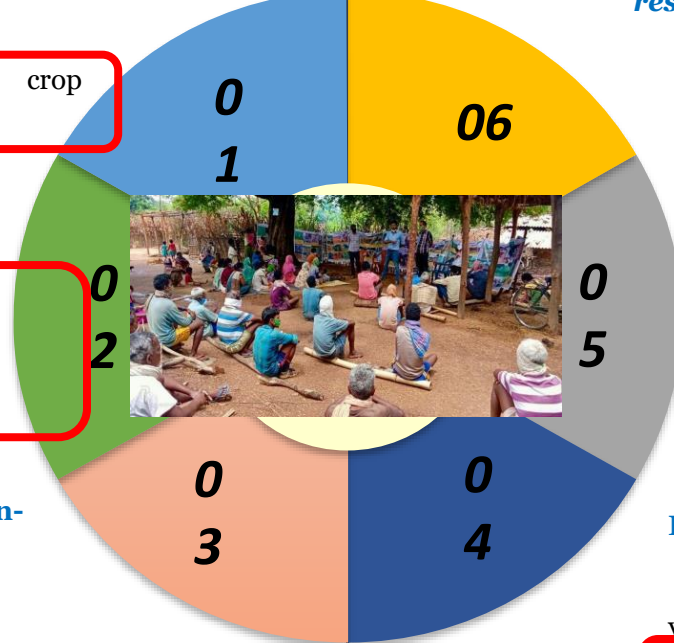
Back up plan – copping mechanism

Inter cropping, rely cropping and mix cropping to ensure minimizing cost and maximizing return.

Delegation of responsibility-

Selection, training & deployment of village champions in each village

Experimentations in demo + farm experimentations on small plot



Consultation at Grass roots and selection of crops and varieties-

Planning meeting conducted across locations

Land & season based variety & crop selection

Resource deployments-

Preparation of crop calendar, Standard packages of practices of each crop, inputs to be tested & training planning in advance

Training and Handholding (On-field and Class Room) –

OUTLINE

1. Overview paper and IFAD examples

2. Farmer Field Schools for agroecology through collaboration, Suzanne Phillips, Global Farmer Field School Platform, FAO

3. Lessons learnt on scaling

4. WFP experience in digital innovations to empower community driven innovations



What would happen if...



Farmer Field Schools



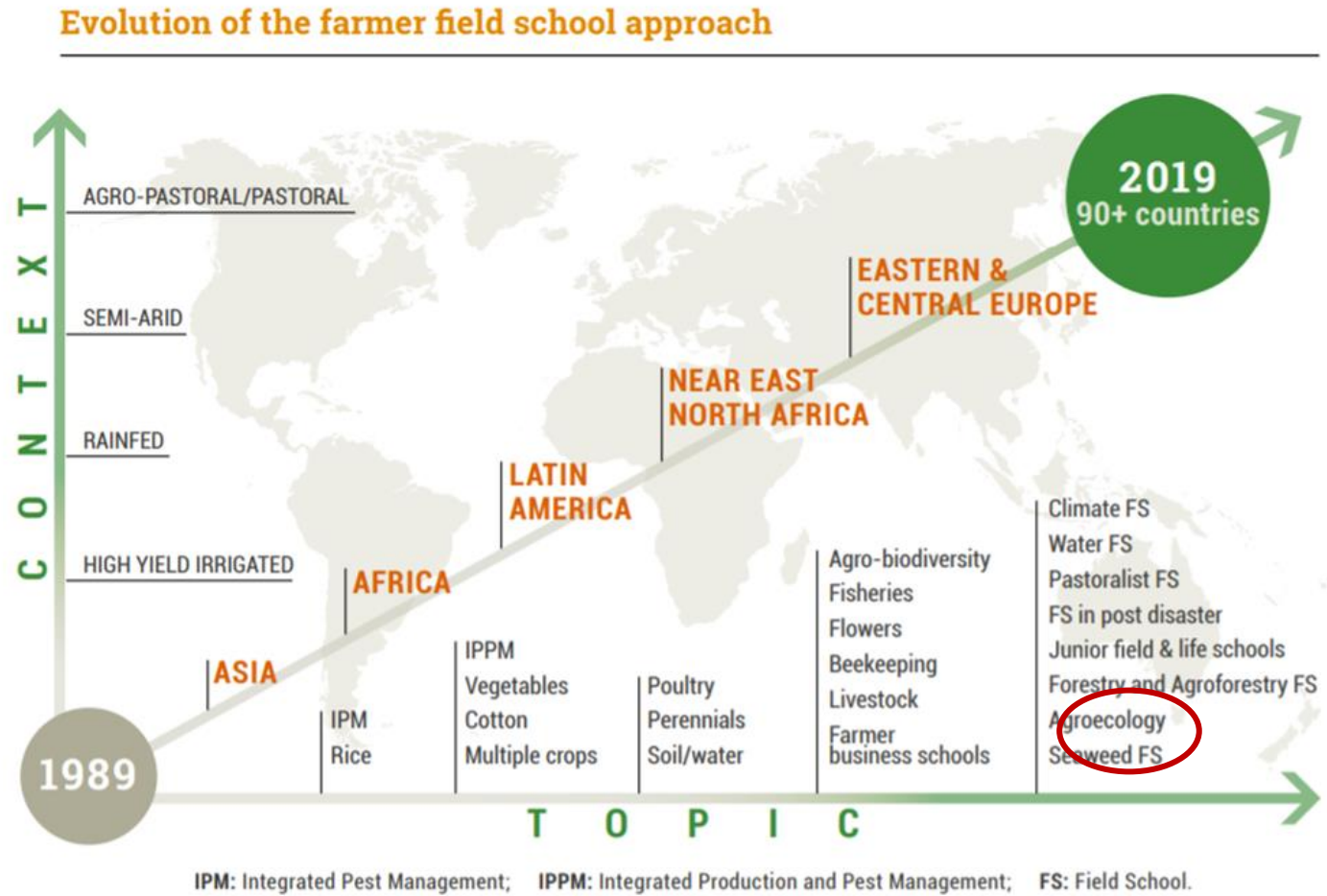
- Experimentation and learning
- Locally-adapted solutions to farmers' challenges
- Increased ecological literacy
- Farmer group empowerment
- Healthier communities



Farmer Field Schools today

- Indonesia 1989
- Every year 400000- 1 million farmers trained
- 90+ countries
- Expanding entry points

How can Farmer Field Schools play support farmers in agroecological transition?



FAO (2019). Farmers taking the lead: thirty years of farmer field schools. Rome. <http://www.fao.org/publications/card/fr/c/CA5131EN/>

Farmer Field Schools for agroecology

- Experiment with new ways of doing things
- Creating different systems
- Groups are key for change!
- Especially for women

Foundation = investing on facilitators



How to go from a few groups to...

- Combine with Farmer Organizations
- Collaborate with research
- Complement with (simple) digital technologies
- Document and share what works
- Monitor and Evaluate together



Upcoming studies

- IFAD – Collective action, self-organization and role of Fos in upscaling and institutionalizing FFS
- FAO, IFAD, Oxfam – E-powerment tips for facilitators
- FAO – Toolkit for Monitoring, Evaluation and Learning of FFS
- CIRAD, FAO & AVSF – How to mobilize FFS to support AE transitions?
- FAO – Stocktaking of FFS for agroecology

OUTLINE

1. Overview paper and IFAD examples
2. Farmer Field Schools for agroecology through collaboration

Suzanne Phillips, Global Farmer Field School Platform, FAO

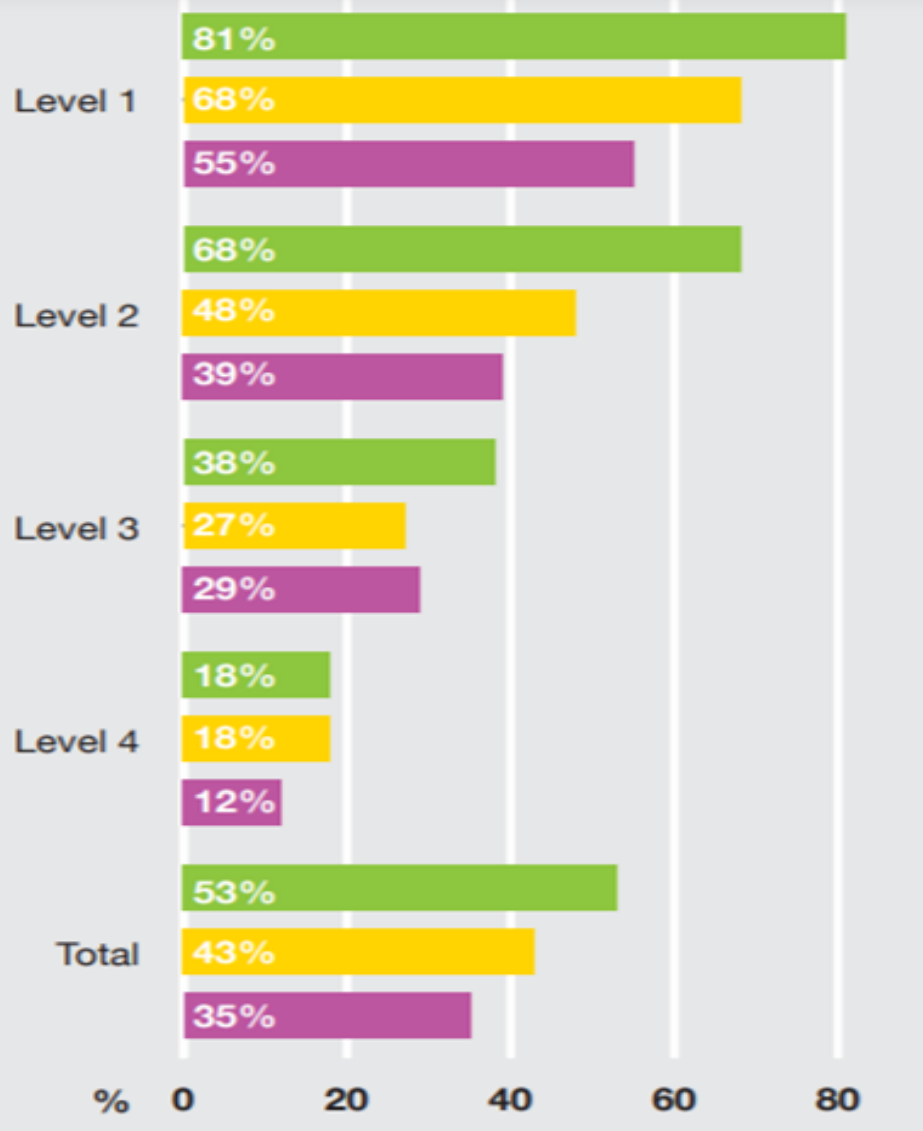
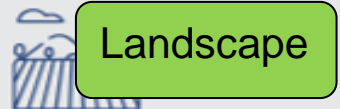
3. Lessons learnt on scaling
4. WFP experience in digital innovations to empower community driven innovations



Community driven approach at heart of IFAD-AL-NBS

Example from LEAD eval CDD &

AE stock take



- 28% APR project with CDD
- More effective & as efficient
- 77% of production project incl AE
- AE project more holistic & perform better in gender, nutrition, youth, climate and indigineous people
- CDD s essential to landscape, market & policy / services of AE project
- But need to invest in institutionalization and scaling

Investing in network & ICT4D to address challenges of community driven adaptation & scale

- Local implementation
- Dual approach: Representative systems & outreach
- Partnership & policy

Limited budget & outreach

Local capacity

- Empowering communities & LSP
- scalable trainings & backstopping, Education
- Community of practices
- Incentives & remuneration

- Meaningful disaggregated engagement
- Data collection & analytical framework
- Digital innovations & GIS

Quality analysis & targeting

Source of innovation

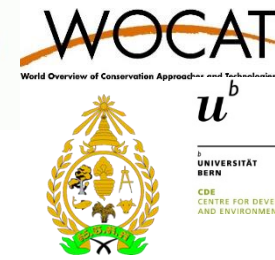
- Blending internal & external KM, practices & sciences
- Comparison. good KM,
- Peer exchange, network

Increasing roles of digital & networks to re-connect and empower community driven adaptation

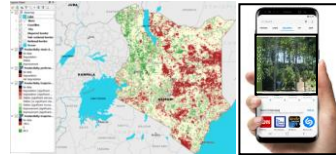


Scaling through knowledge network and communities of practices :Wocat example

Sophea tim, Rua, Nicole Harari & Isabelle Providoli, CDE



maintain global, open SLM network



- global network of SLM experts and practitioners present in over 60 countries which:

harmonize and further develop tools and methods with partners



provide open access global SLM data repository

- knowledge production, exchange and learning
- standardized tools and open access data
- Strengthens participation and equity in decision-making processes
- Support scaling up processes



build capacities at local, regional and national level



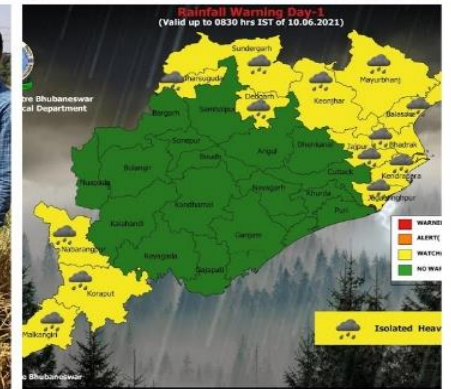
underlying principles:
- neutrality
- inclusiveness
- linking local land

- WOCAT Regional Clusters are set up to enhance South-South collaboration and sharing of experiences and innovations

Leveraging community driven ICT to improve resilience of fishing communities

Pradnya Paithankar, Head of Policy Design, CC-DRR, SSTC WFP India CO

Katuscia Fara, senior advisor CC, WFP Asia Pacific



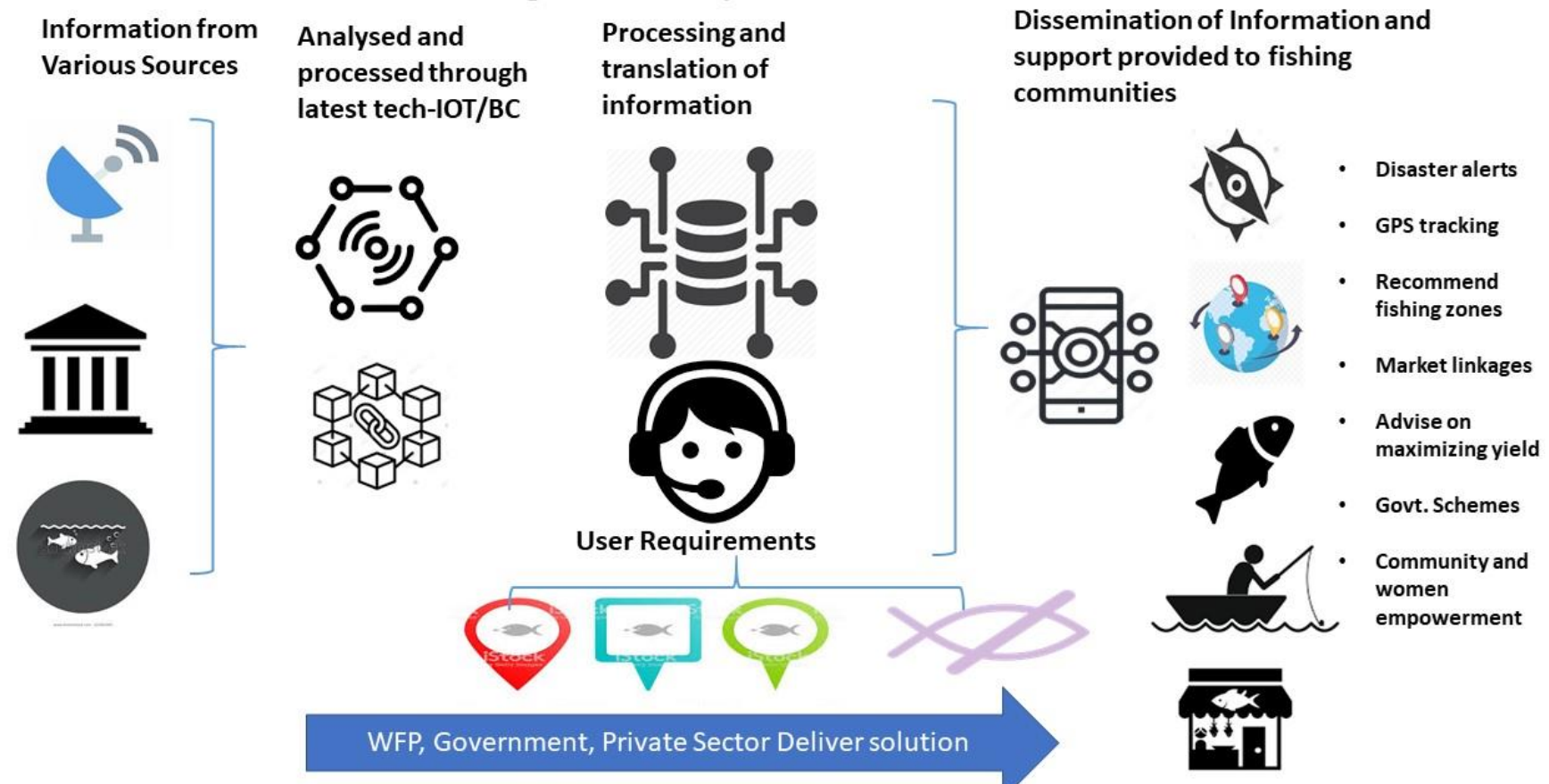
Leveraging adapted ICT

WFP experience in Odisha, India

Improving fishing community resilience to climate change

- **Climate information tailored for last mile use**
- **Improved resilience and adaptation capacities**
- **Local governance and ownership by the government.**
- **Successful models demonstrated in the geographies would be advocated for scale-up in other geographies**

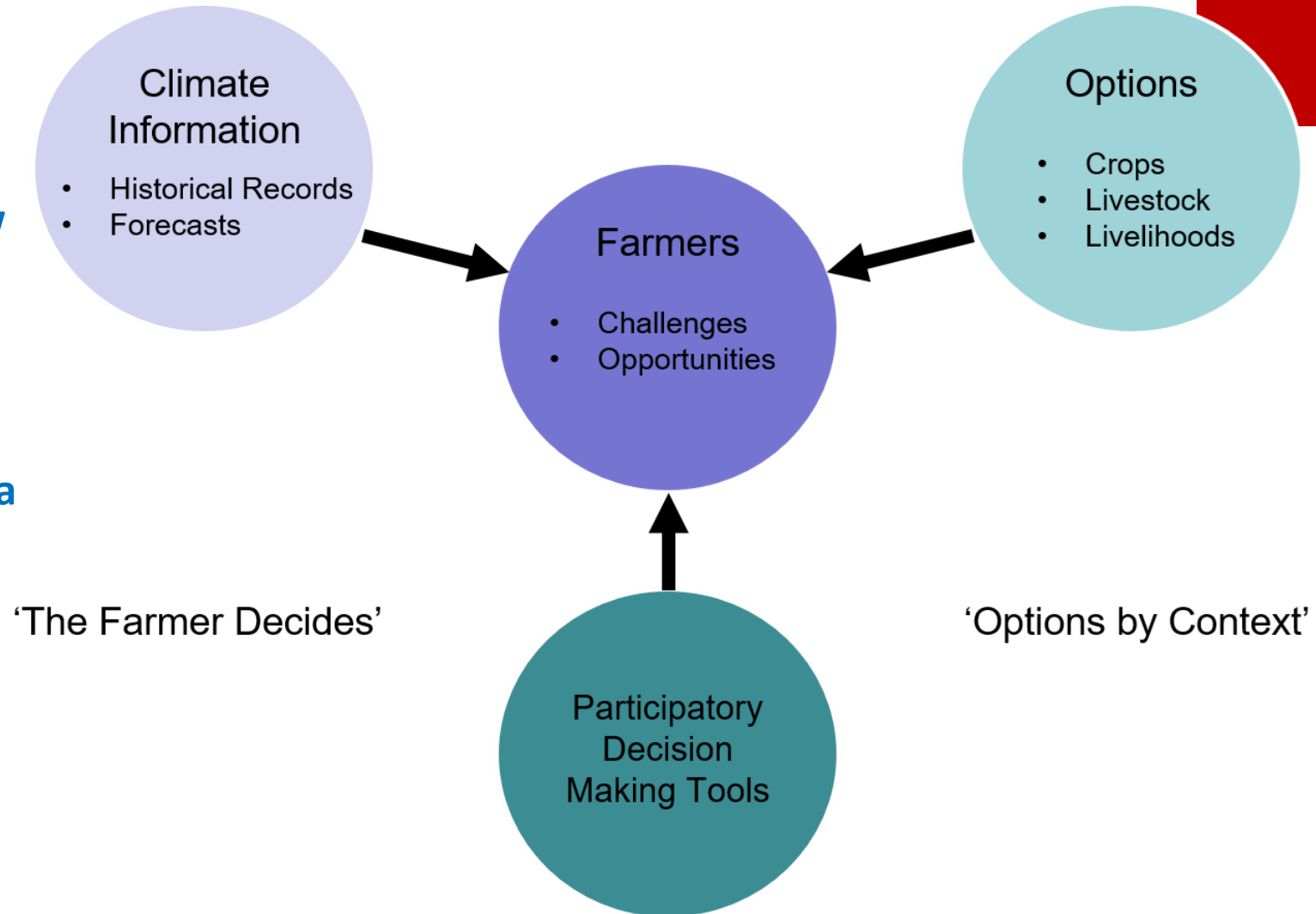
“SecureFishing” - Proposed Solution



Leveraging adapted ICT : Lessons aligned with Blue print

WFP experience in Odisha, India :Improving fishing community resilience to climate change

- Co-creation of tools with communities, farmer centred development
- Equity & inclusion: focus on vulnerable, what data is good data for whom & How
- Iterative development
- Building sustainable capacities among communities and service providers to **take decision** based on valid climate data
- Empowered communities **with more choices-** for improved livelihoods
- Scalability requires close collaboration with the Government & 4P



CONCLUSION AND NEXT STEPS

- Community driven approach can be powerful to drive agro-ecological transitions but need to be accompanied by
 - Additional attention to intra communities diversity
 - long term capacity development effort for last mile implementors,
 - dual approach with strong attention to KM and networks
- Tailored digital innovations can empower such community driven approach as well as backstop last mile implementors
- ARI to accompany such process to facilitate the blending of local and scientific knowledge, tools to improve decision making of communities and help identify “what works where and for whom”
- Next: collaborations towards cross agency paper to take lessons and guidance on improving scaling and targeting of CDD along partnership